

Girls Lacrosse

STUDENT-ATHLETE PROGRAM TUITION
 SPRING SEMESTER 2025-26

SPRING SEMESTER

The Student-Athlete Tuition Package is the cornerstone of the IMG Academy experience, focusing on academic, athletic & personal development, and represents the greatest value. The boarding package includes private school tuition, sport tuition as well as standard housing & meal options.

STUDENT-ATHLETE TUITION PACKAGE*	BOARDING	DAY
POST-GRAD (HIGH SCHOOL & COLLEGE)	\$52,800	\$41,300
HIGH SCHOOL (10TH-12TH GRADE)	\$52,800	\$41,300
HIGH SCHOOL (9TH GRADE)	\$51,700	\$40,100
MIDDLE SCHOOL (6TH-8TH GRADE)	\$50,600	\$39,100

*Deposits & Fees detailed below are not included in tuition

DEPOSITS AND FEES

FIXED FEES	
STUDENT ACTIVITY	\$400
COMPETITION FEE	\$6,350
US HEALTH INSURANCE FEE	INQUIRE
HEALTH SERVICES FEE	\$550

VARIABLE FEES	
SENIOR FEE	\$450
INTERNATIONAL FEE (NEW STUDENT)	\$1,100
INTERNATIONAL STUDENT TRANSITION PROGRAM (NEW STUDENTS)*	\$3,000
INTERNATIONAL FEE (RETURNING STUDENT)	\$350
NEW STUDENT FEE	\$650

REFUNDABLE DEPOSITS	
MEDICAL DEPOSIT**	\$400

† Sales tax will be added to meal portion of tuition for both add-on & bundled prices

*Please inquire with Admissions for eligibility

**Refundable if not used and are required for both Academy Year & Single Semester students

EXPLANATION OF DEPOSITS & FEES

All students are required to have health insurance coverage from a US health insurance company, or purchase health insurance offered through IMG Academy.

MEDICAL DEPOSIT –

Used to cover unreimbursed medical expenses or when payment is required at time of visit.

TOURNAMENT DEPOSIT –

Used to cover the payment of tournament & travel expenses.

STUDENT ACTIVITY/COMPETITION FEE –

At IMG Academy, school/sports have different requirements when it comes to competition, travel expenses, etc. The competition fee can be used in conjunction with the individual tournament deposit to cover these expenses.

Deposits & Fees including (but not limited to) New Student Fee, Sales Tax on Meals, Need-Based Services, Specialty Programs, and Upgraded Housing & Meals are not included in Student-Athlete Tuition Package rates.

NEEDS-BASED SERVICES

Working with individual student-athletes, we recognize that each one's needs are unique. We have designed our admissions process to help identify and accommodate the needs of the individual. At IMG Academy, we provide special services and amenities to help pave each individual's path to reach their full potential. We offer a host of Need-Based Services that you may request. Some services may be required for enrollment based on admissions evaluations. These services include (but are not limited to) the following:

These services include (but are not limited to) the following:

LEARNING RESOURCE CENTER (LRC) PROGRAM –

IMG Academy offers multiple levels of service programs in conjunction with the LRC. These programs offer supports ranging from the creation of an individualized learning plan for classroom accommodations to individualized attention supports that can work to elicit executive functioning skills development and organizational maturation. These programs range from being free up to \$2,375/semester depending on individual needs.

ENGLISH LANGUAGE LEARNING (ELL) PROGRAM –

Students enrolling at IMG Academy with less than an acceptable language proficiency score will receive supplemental English language classes and/or additional accommodations to support their English proficiency until it reaches a requisite level. Typically, students take anywhere from two to four classes per semester (program cost \$1,600/semester).

STUDENT-ATHLETE MEALS, HOUSING & UPGRADES

Standard shared rooms and meals (breakfast, lunch and dinner) are included in boarding tuition. Non-boarding tuition includes lunch. Please inquire with a Student-Athlete Advisor regarding housing, laundry service, and meal upgrades

MEAL PLANS & UPGRADES	BOARDING	DAY
DAY STUDENT MEAL PLAN (L)	N/A	INCLUDED
ONE ADDITIONAL MEAL (B/D)	N/A	ADD \$1,350
BOARDING STUDENT MEAL PLAN (B,L,D)	INCLUDED	ADD \$3,300

**MEAL PLAN UPGRADES are available for purchase for DAY programs (Sales Tax will be charged on all meal plans).*

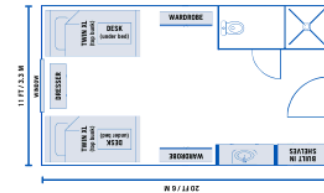
ASCENDER HALL - STANDARD

THE HUDDLE

INCLUDED WITH BOARDING TUITION

The Huddle is shared living at its finest! The two bunk beds/desk layout allows students-athletes to comfortably live with his/her roommate. Sized at 150 Square Feet, the Huddle also features a full bath, room for additional seating and shelving in addition to access to Ascender Hall's amenities and conveniences,

DOUBLE OCCUPANCY



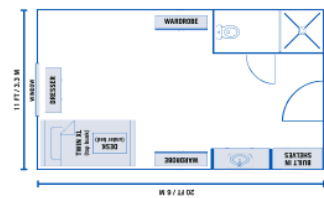
ASCENDER HALL - ROOM UPGRADES

THE ACE

*FULL YEAR: \$20,000 | SEMESTER ONLY: \$11,700

Sized at 150 Square Feet, the Ace Room allows for on-campus housing at its peak! This layout, which mirrors that of The Huddle, allows for boarding student-athletes to live comfortably in their personalized, single residence hall room. Completely furnished with a bunk bed/desk, a full bath, and all of the additional seating and shelving options.

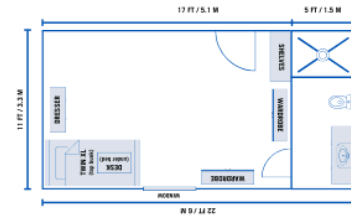
SINGLE OCCUPANCY



THE CHAMPIONSHIP

*FULL YEAR: \$22,000 | SEMESTER ONLY: \$12,900

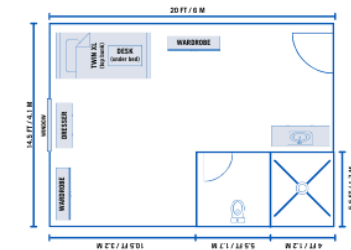
Championship is our third largest rooming option in Ascender Hall. Sized at 187 Square Feet, the private room provides ample room for additional living space, in addition to its bunk-style setup and full bath.



THE VICTORY

*FULL YEAR: \$23,000 | SEMESTER ONLY: \$13,500

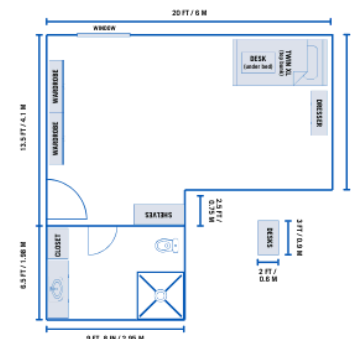
As the second largest living option, Victory gives you the best of both worlds. Sized at 221 Square Feet, the spacious layout features all of the benefits the Ace room has to offer. Take advantage of the additional space to add amenities and personalize your room.



THE GRAND SLAM

*FULL YEAR: \$24,000 | SEMESTER ONLY: \$14,100

Hit a Grand Slam this year with our premier housing option. Sized at 270 Square Feet, the Grand Slam layout is the largest living option for our student-athletes, providing an exclusive living area and enhanced bathroom design.



*Room layouts subject to change based upon allocations of grades and buildings.

LAUNDRY SERVICES:

At IMG Academy, we understand that managing laundry can be a challenge for busy student-athletes, which is why we offer a convenient and efficient laundry service tailored specifically for our boarding students. Here's how our service works:

LAUNDRY BAG DISTRIBUTION

Each student is provided with a durable 25 lb. nylon laundry bag to use for their laundry needs. This bag is designed to hold a week's worth of laundry comfortably.

SCHEDULED DROP-OFFS

To streamline the process, we have designated two drop-off days each week. Students can leave their filled laundry bags in the designated bins located in the lobby of every dorm.

EFFICIENT TURNAROUND

We guarantee a 48-hour turnaround time from drop-off to delivery, ensuring that students have a continuous supply of clean clothes.

DELIVERY

Clean laundry is not only washed and dried with care but also delivered back directly to the student's dorm room, adding an extra layer of convenience.

ECO-FRIENDLY AND HYPOALLERGENIC WASHING

All laundry is washed in cold water and dried on medium heat to maintain fabric integrity and energy efficiency. We use commercial-grade laundry detergent that is free from dyes and fragrances, making it suitable for sensitive skin.

Our goal is to provide a hassle-free laundry experience that allows students to focus more on their studies and training and less on household chores.

LAUNDRY SERVICES	COST
FULL SCHOOL YEAR (FALL & SPRING)	\$1750
FALL SEMESTER	\$1100
SPRING SEMESTER	\$1100

HOUSEKEEPING OFFERED:

At IMG Academy, we are committed to ensuring that our students and families experience a comfortable and clean environment. Our dedicated housekeeping team provides weekly top-level cleaning services designed to maintain a hygienic and welcoming atmosphere in our boarding facilities.

We maintain the cleanliness of our main entrances and hallways by emptying trash cans, sweeping, mopping, and disinfecting floors, and wiping down entry doors both inside and outside to ensure a pristine welcome area.

Each week, our team will thoroughly clean and disinfect all bathroom areas, including toilets, shower walls, fixtures, and curtains. We ensure that toilet paper is replenished, and trash cans are emptied. Our services extend to the vanity areas where we clean and disinfect sinks, mirrors, and countertops, ensuring these areas are spotless and germ-free. In the bedrooms, we dispose of any trash, clean furniture, and vacuum, sweep, and mop the floors to keep the living spaces tidy and comfortable for our residents.

Through our comprehensive housekeeping services, we aim to provide a seamless and stress-free living experience, preparing students to excel in their academic endeavors without concern over the cleanliness of their living spaces.

PAYMENT OPTIONS

PAY IN FULL

Full tuition payment minus the enrollment deposit is due on June 1 for fall semester enrollment and November 1 for spring semester enrollment. Families choosing this option pay the full annual tuition in one upfront payment.

PAYMENT PLAN

This plan provides flexibility by splitting tuition into 10 monthly installments, with payments beginning on June 1. A financing fee will apply to this option. Payment (1), due by June 1, includes at least 30% of student-athlete tuition, and all deposits and fees. Payments (2-10) are split into (9) equal installments and due the 1st of each month, starting July 1 and ending March 1.

ENROLLMENT DEPOSIT:

A non-refundable deposit of \$10,500 for domestic students and \$11,600 for international students is due at the time of enrollment to secure the student's placement.

ADDITIONAL INFORMATION:

Pay in full option is required to be paid via check or wire transfer. Monthly payments may be made via wire transfer, credit card, or check, with detailed instructions provided in the enrollment agreement. Please note that payment schedule outlined on the Perpetual Enrollment Agreement will be followed and payments are expected on time, regardless of enrollment date.

LATE PAYMENTS:

A late fee may apply if a payment deadline is missed. Families are encouraged to reach out to discuss alternative arrangements if needed to avoid any disruption to the student's enrollment.

SPECIALTY PROGRAMS

Please inquire with a Student-Athlete Advisor for information and pricing for our specialty programs:

NEW INTERNATIONAL STUDENT TRANSITION PROGRAM:

The International Student-Athlete Transition Program for new students at IMG Academy helps non-native English speakers adjust to academic and campus life by building essential vocabulary and preparing for English placement tests. This 2-week program ensures a smooth transition with targeted language support and familiarization with American culture and campus policies.

STUDENT-ATHLETE SUMMER PROGRAM:

Boarding school students at IMG Academy can take advantage of special rates for the Student-Athlete Summer Camp Program, which offers advanced training in their sport of choice. This exclusive benefit provides an opportunity to continue skill development, stay in peak condition, and prepare for the upcoming school year.